

Catholic Church of St. Katharine Drexel Financial Scorecard November 2011

	Income/Expense Summary Month			Income/Expense Summary YTD		
	Revenue	Expense	Variance	Revenue	Expense	Variance
Budget:	\$ 29,803.33	\$ 35,538.08	(\$5,734.75)	\$ 187,601.65	\$ 174,535.61	\$13,066.04
Actual*:	\$ 38,070.53	\$ 23,534.69	\$14,535.84	\$ 186,673.38	\$ 169,125.50	\$17,547.88
Variance:	\$8,267.20	(\$12,003.39)		(\$928.27)	(\$5,410.11)	
Bridge:	\$ 6,243.20			\$ 54,674.87		
		Net Revenue:	\$14,535.84		Net Revenue:	\$17,547.88

* Includes revenue from St. Kate's Bridge Campaign

Fundraising		
	Month	Total
Special Events:	\$ 1,272.22	\$ 2,613.28
Scrip:	\$ (120.95)	\$ (173.05)
Total:	\$ 1,151.27	\$ 2,440.23

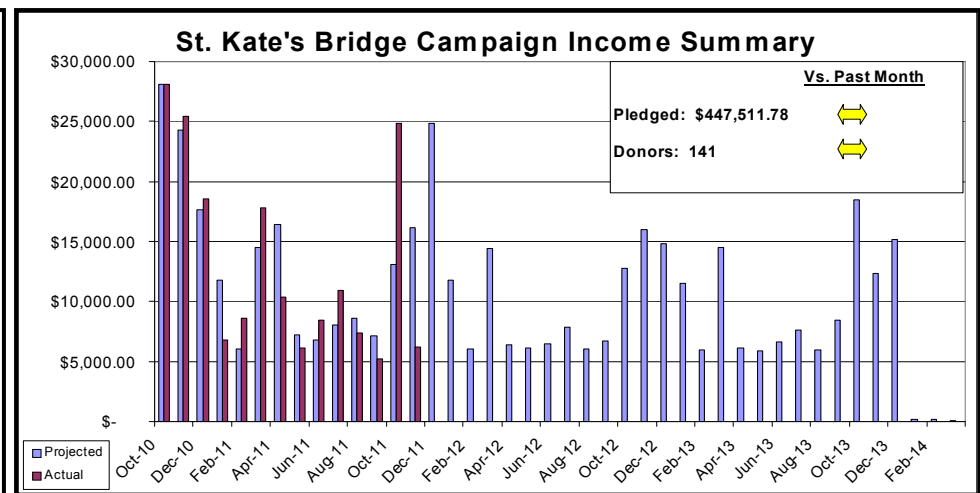
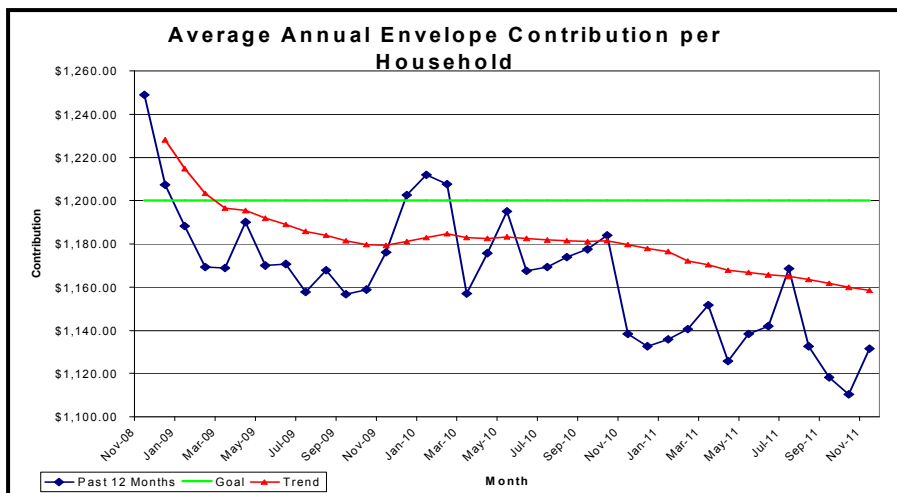
Special Funds		Versus Past Month
Building Fund	\$ 107,717.18	Increase
Designated Gifts	\$ 4,352.09	No Change
Total:	\$ 112,069.27	Increase

Contributions		
Envelope:	\$ 25,808.43	Versus Budget
Plate:	\$ 656.26	Versus Budget
Total:	\$ 26,464.69	Versus Budget
Plate vs. Envelope	2.54%	
# of Households:	271	Versus Prev. Month
# of Households on auto-withdrawal:	86	Versus Prev. Month
	32%	Versus Goal of 50%
Annual Envelope per Household:	\$ 1,131.55	Versus Goal of \$1200.00

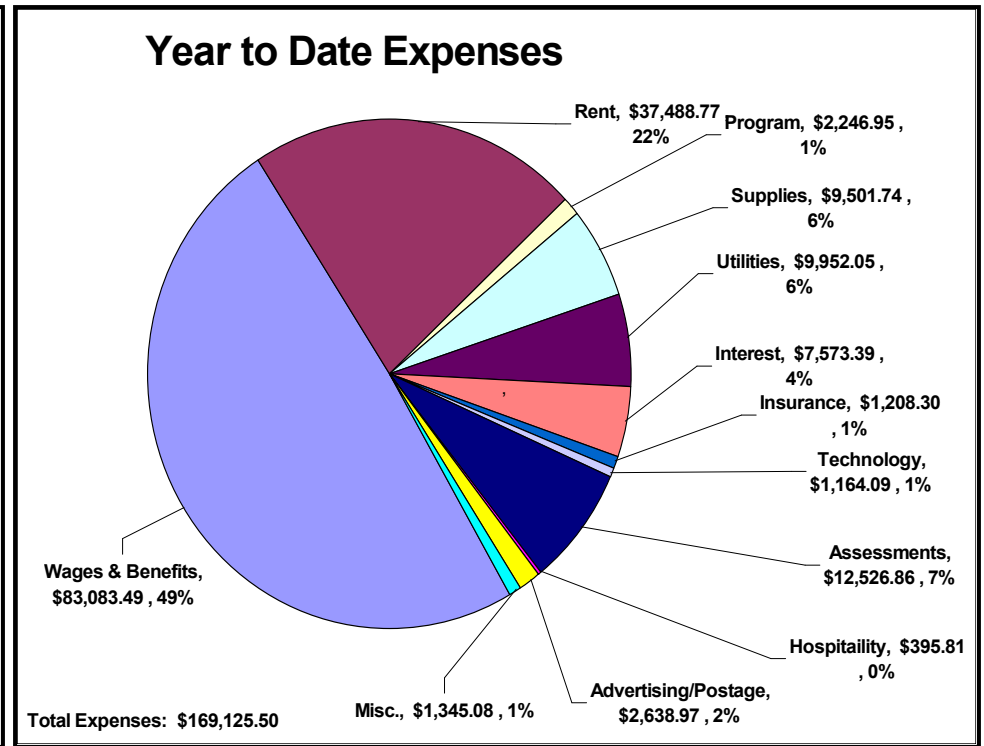
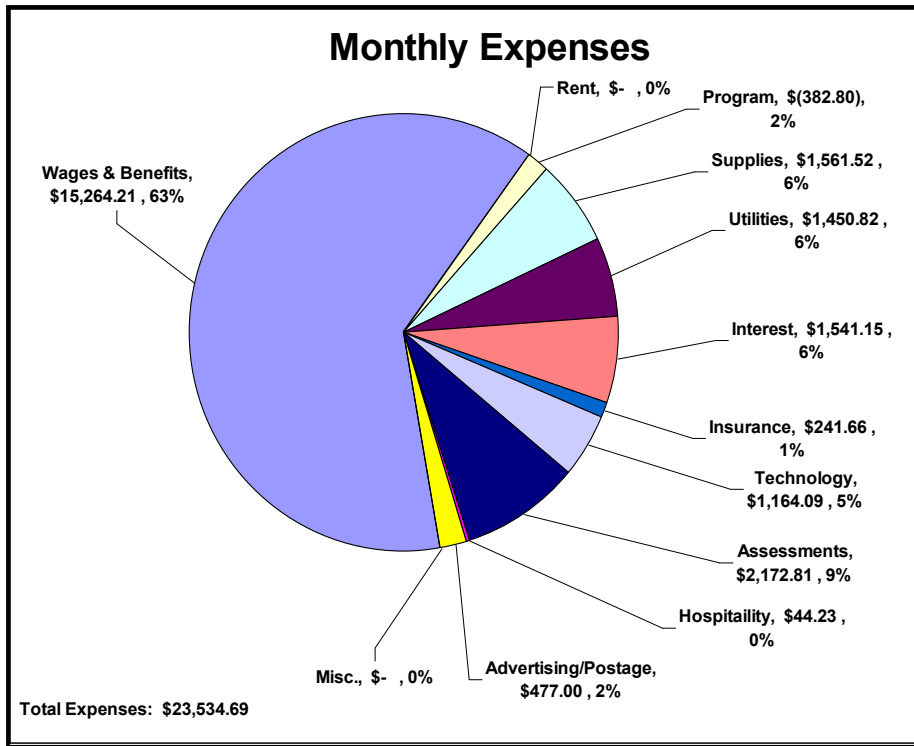
Projected Cash Position at End of Fiscal Year			
Fiscal Year	Without St. Kate's Bridge Campaign	With St. Kate's Bridge Campaign	Vs. Prev. Month
2012	(\$87,949)	\$41,180	
2013	(\$99,551)	\$15,298	
2014	(\$90,811)	\$22,321	

Key		
Positive	Negative	No Change

Assets		Versus Past Month
Current:	\$ 167,491.33	Decrease
Long-term:	\$ 4,190,150.49	Decrease
Total:	\$ 4,357,641.82	Decrease
Liabilities		Versus Past Month
Current:	\$ 1,091,247.40	Decrease
Long-term:	\$ 255,296.70	Decrease
Total:	\$ 1,346,544.10	Decrease



Catholic Church of St. Katharine Drexel Financial Scorecard November 2011



Catholic Church of St. Katharine Drexel Financial Scorecard November 2011

